

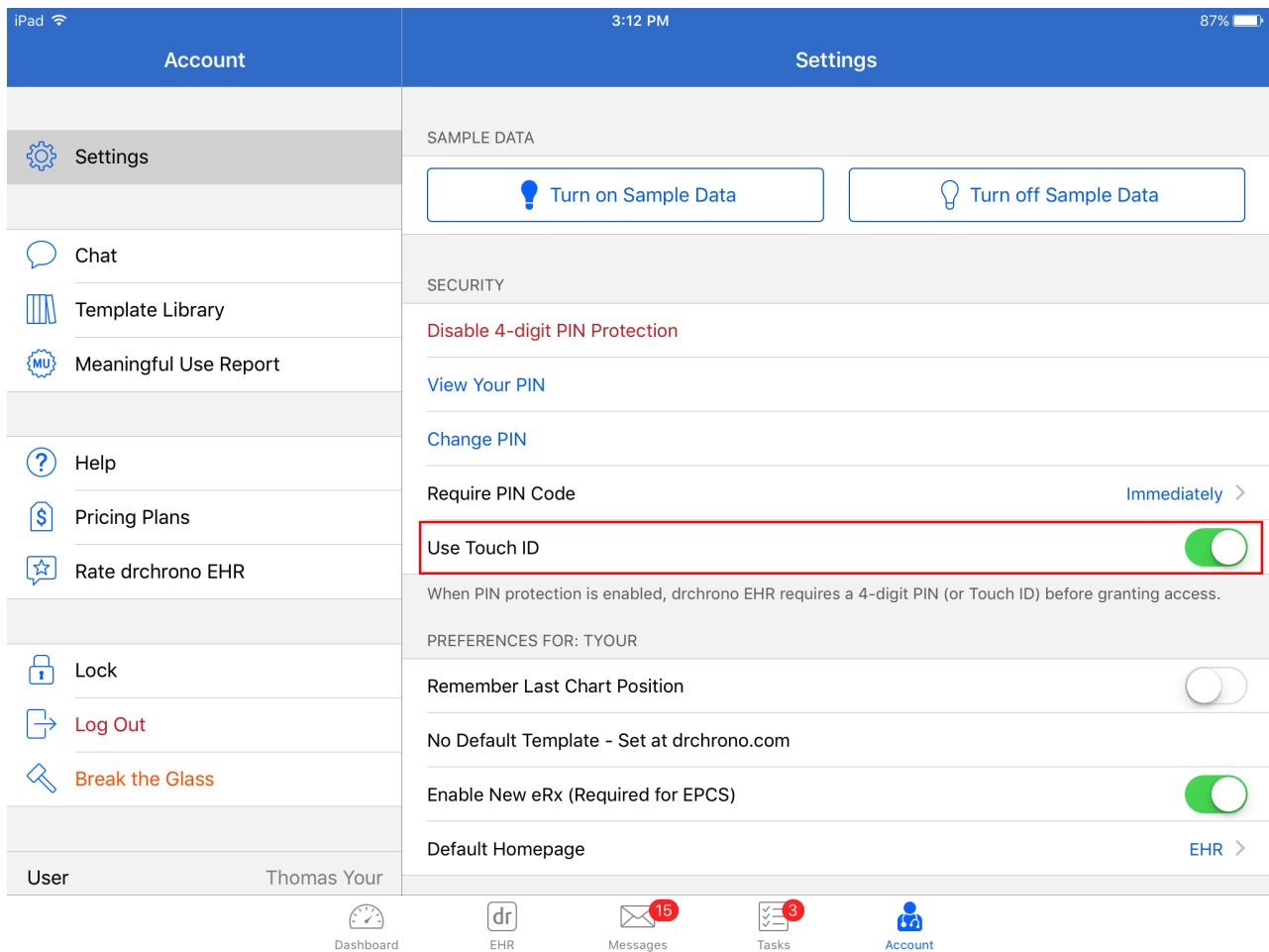
Enable Touch ID Fingerprint or Face ID Login on the iPad

07/08/2024 7:33 pm EDT

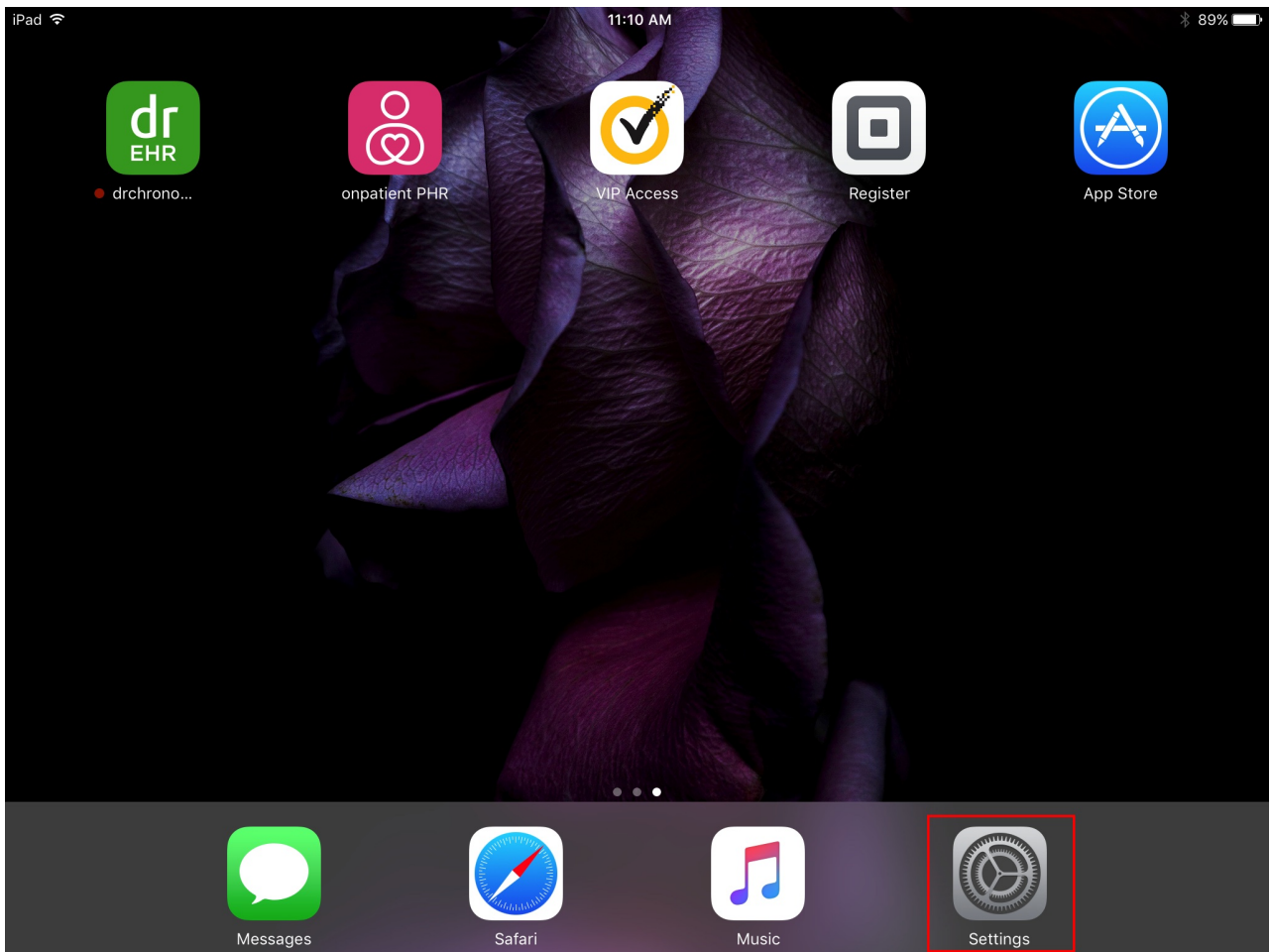
Enabling Touch ID on the EHR/EMR App

In the [EHR/EMR app](#), Touch ID is a convenient way of logging in to your DrChrono account using your fingerprint. First, make sure your device supports Touch ID. Touch ID is available on the iPhone 5s or later, the iPad Pro, iPad Air 2 or later, and the iPad Mini 3 or later. You can identify your iPad model [here](#).

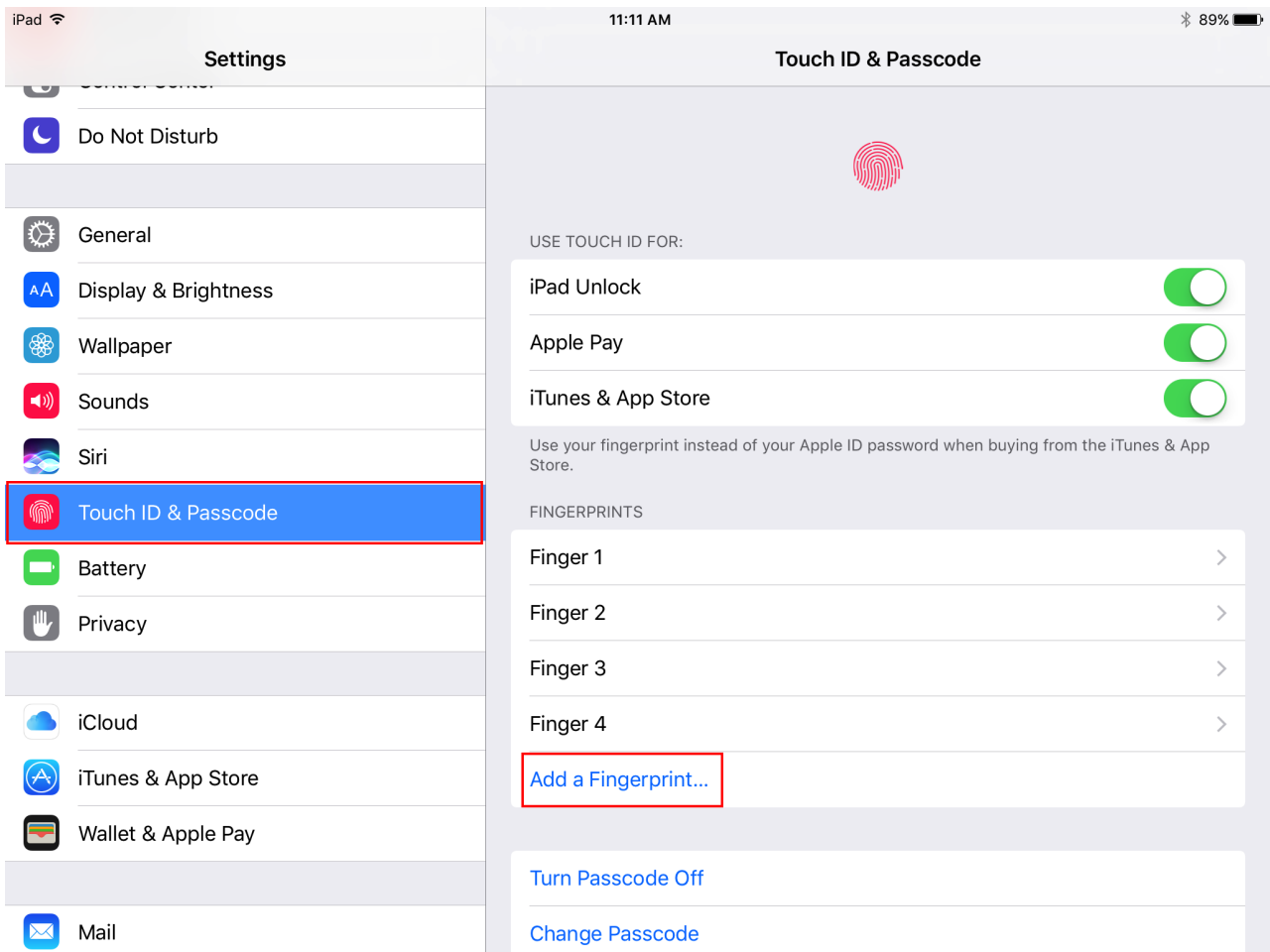
If your device has Touch ID enabled, log into your DrChrono app and select **Account**. Make sure that the **Use Touch ID** switch is enabled so that the indicator is green.



Once your Touch ID setting is enabled, you will need to add your fingerprints to your device's fingerprint registry. To begin, tap on settings on your iPad.



Select **Touch ID & Passcode** on the left-hand navigation bar. Then, select **Add a Fingerprint** to bring up on-screen instructions on recording your fingerprints. Once that is completed, Touch ID will automatically prompt you for a fingerprint when you open your DrChrono EHR/EMR app.



Enable Face ID Login

You can also enable Face ID to log in to DrChrono. First, you have to set up Face ID on your iPad For more information on setting up Face ID see Apple's site [here](#).

After setting it up, you can use it to log in to your DrChrono app. You will be prompted to allow DrChrono to use Face ID. Tap **OK** to allow. You will now be able to use Face ID to log in to DrChrono's app on your iPad.

Log In

With Password

Logged in as: kimcunningham



Enter your drchrono PIN

(which you received in an email after signing up.)



**Do you want to allow
"DrChrono EHR" to use Face
ID?**

Allow DrChrono to use Face ID to
unlock the app.

Don't Allow

OK



You can disable Face ID in the app settings on your iPad.

DrChrono EHR

ALLOW DRCHRONO EHR TO ACCESS

 Location When Shared >

 Face ID

 Siri & Search >

 Notifications >
Off

 Background App Refresh

Allow Tracking

DRCHRONO EHR SETTINGS

GENERAL